

# MONTHLY MEMBERSHIP PROGRESS REPORT

District 325 J

Results as of: 5/31/2024

GMT:

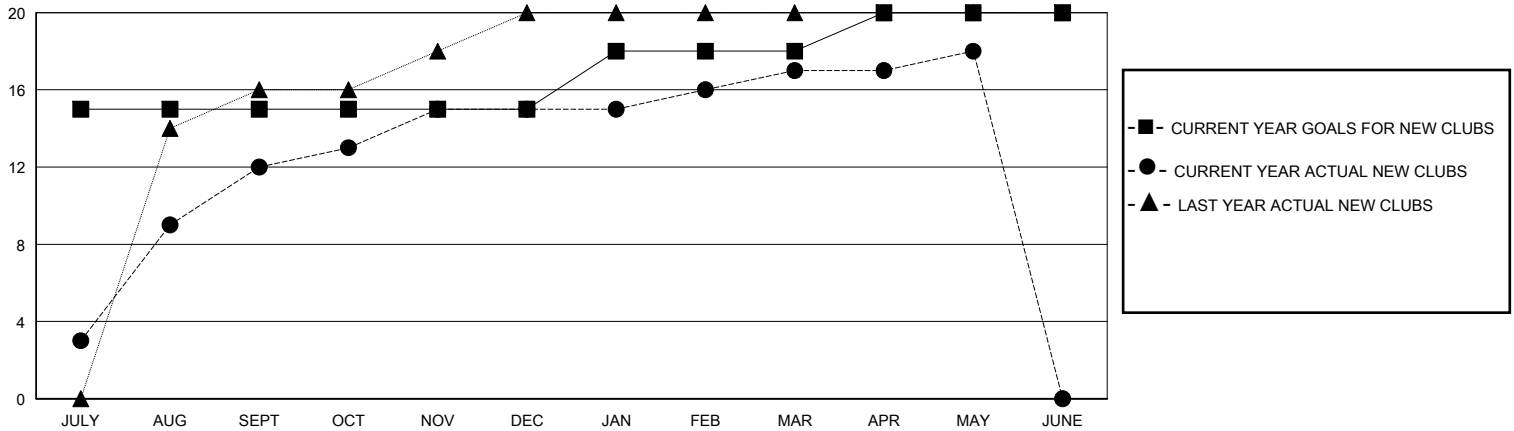
LOCATION NEPAL

GMT CA

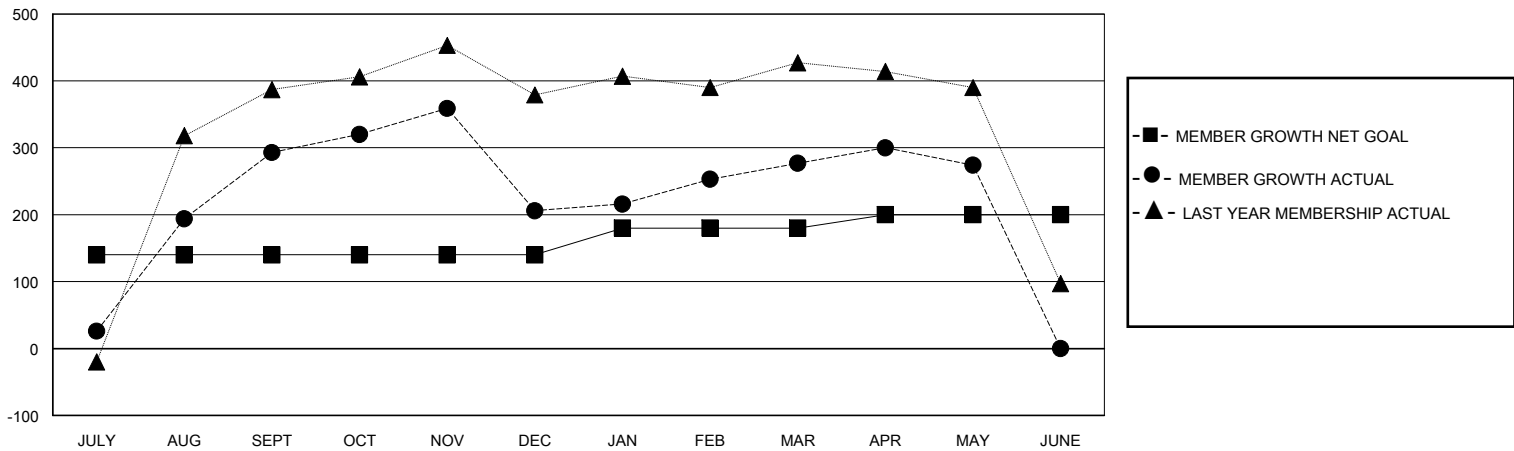
Clubs			
RESULTS FOR 2023-2024			
QUARTER	NEW CLUB GOAL	NEW CLUBS	DROPPED CLUBS
JULY/AUG/SEPT	15	12	0
OCT/NOV/DEC	0	3	4
JAN/FEB/MAR	3	2	1
APR/MAY/JUNE	2	1	0

Members			
RESULTS FOR 2023-2024			
QUARTER	MEMBER GROWTH NET GOAL	MEMBER GROWTH ACTUAL	DROPPED MEMBERS ACTUAL (including transfers)
JULY/AUG/SEPT	140	384	91
OCT/NOV/DEC	0	120	205
JAN/FEB/MAR	40	164	84
APR/MAY/JUNE	20	58	47

GOALS AND ACTUAL NEW CLUBS CUMULATIVE



GOALS AND ACTUAL MEMBERS CUMULATIVE



DROPPED CLUBS: 5	
<b>DROPPED MEMBERS</b>	
DECEASED	0
CLUB CANCELLED	93
OTHER	334
<b>TOTAL</b>	<b>427</b>

76 CLUBS OF 110 ADDED 1 OR MORE NEW MEMBERS

GENDER DISTRIBUTION	
MALE	1,715 (68.06%)
FEMALE	805 (31.94%)

[CLICK HERE FOR CUMULATIVE MEMBERSHIP DATA](#)

TOTAL FAMILY UNIT MEMBERS	1,779
FAMILY MEMBERS PAYING HALF DUES	1,184